



warragul camera club Inc.

www.warragulcameraclub.org



Please submit articles, images,
interesting web links to the editor at:

newsletter@warragulcameraclub.org

**DEADLINE FOR ARTICLES FOR THE
DECEMBER 2022 NEWSLETTER:**

25th November

Club Calibrator for Hire

Colours and brightness of computer screens and monitors change over time. In order to see images correctly screens and monitors need to be regularly calibrated.

To save club members the expense of purchasing a calibrator (in excess of \$600) you can hire the club X-rite i1Studio calibrator for \$15 per week. If you are unfamiliar with its usage, a helpful tutorial is available on YouTube. Details of this tutorial have been document and will be in the calibrator case.

Contact Bruce Langdon for bookings.

0418 595 080

bruce@brucelangdon.com.au

50th Warragul National Competition and Exhibition 2023

What is it I hear you say.....

The national is made up of two parts, the Australia wide photographic competition and the exhibition of the accepted prints and digital images.

Our club is holding our 50th National next year which is a huge milestone. It is especially important because it is one of only two Victorian national competitions that have printed and digital images. This has been made possible because of the dedication of many club members. Our gratitude must go to those members who have given their time over the years.

How can you be involved?

There are many ways to be involved, including entering images into the competition, helping set up for the judging day and/or the exhibition and being part of the judging day team and welcoming people to the exhibition.

Planning for the competition side has now been completed and information about that is on the national web site (warragulnational.org) which also has a link from our club web site.

The competition will open in early January. However, if you are interested in entering, then now is the time to start putting some of your favourite images aside!

Other dates to note are:

- Entries to the competition close on 15th March 2023
- Judging day is on 1st April. A very educational day where amazing images from across Australia are judged. You can be part of that!
- Setting up the exhibition at the West Gippsland Arts Centre, 11th May 2023 after lunch
- Exhibition days are Friday 12th May to Sunday 14th May inclusive.

Please keep these dates free so that you can be part of this very special celebration.

Closer to the time we will be asking for volunteers, so please keep an eye out for these opportunities!

If you want more information about the national and what is being planned or how you can help, please contact any of the sub-committee. Myself, Kayren Brown, Marshall Cock, Bruce Langdon, Russell Monson, David Woodcock and Robyn Wright.

Jane Woodcock

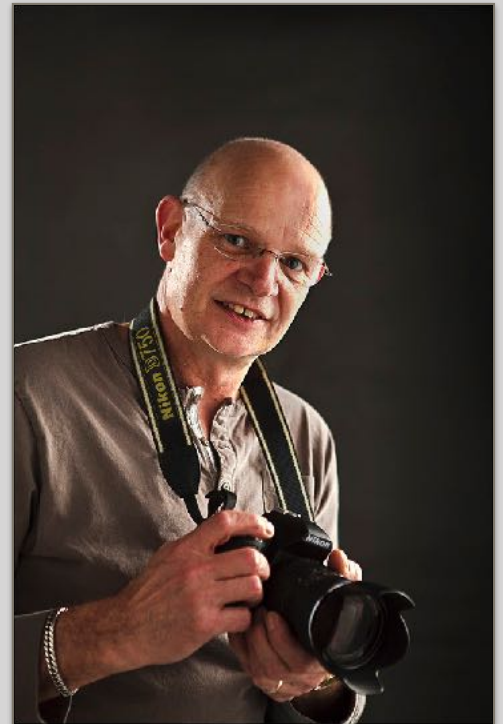
Chair, Warragul National Sub-committee

President's Report

November 2022

Here we are getting to the pointy end of the year with Christmas fast approaching. I hope you have been taking advantage of the extra daylight hours to get in some great photos in between the damp days we've been having.

What wonderful news to announce the winning for the first time of the **PakWag Interclub Competition** held at the RSL club rooms on October 10th. This has been a long time coming and great that Warragul have finally got over the line by only one point over Pakenham. There were some fantastic photographs by both clubs and what a very talented lot we all are. I was very proud to accept the PakWag trophy on behalf of our club and congratulations to all our creative members for their wonderful images. Well done to everyone!!



November General Meeting

The next meeting will again be held at the RSL club rooms and entries for "image of the year" will need to be submitted and will be judged at December's meeting.

November's meeting will feature the judging of the "Scapes" competition, and this is always a very well contested completion with the extra black and white print category and all open grades.

November Tutorial Night - Bring your cameras for a hands-on evening

This will be held on Monday November 14th and will be a "hands on" tutorial/workshop so come along with your cameras for some on-site tuition. What a fantastic opportunity for those who have been itching to get back to some face-to-face workshops to learn and get advice from others. Well known to our club and renowned judge, Adrian Smith, is coming along to give tuition and instruction on "table top" photography. We will be having 3-4 workstations set up with props and lighting and Adrian will run through some great techniques for getting some fantastic images and working with lighting and reflectors.

Be sure to come along as these wonderful opportunities are very worthwhile and you will have a lot of fun as well as learning new skills from Adrian.

December General Meeting

December's meeting night will be the final general meeting we will hold that will be presented on Zoom. It has been a very useful online tool that we used extensively over the covid period, but the amount of technical effort required is prohibitive to keep this going as we are fully back with face-to-face meetings. We want to encourage members to attend the meetings each month, so this decision was made on this basis. Results of competitions and judge's comments are generally

available when Mike emails to the members after our meetings so members who can't attend the meeting can still keep up to date and the newsletter is always your "go to" source for information.

End of year Christmas Party and Awards

This year's Christmas party and awards night will again be held at the Rotary Park rotunda in Latrobe Street. (Same venue as last year) This has proved to be a wonderful venue so again BYO everything for the second Monday of the month (Monday 12th December). Let's hope that we have similar weather conditions as last year as well!!

2023 Competition Schedule

Mike has sent out next years competition schedule and there are a couple of new categories that will test your creativity and challenge your skills. This is what our club is about as you always need to be challenged to become a better photographer. Well done Mike for some innovative topics for next year. One category is "mobile phone" which many other clubs are including nowadays. Never dismiss the ability of a phone to take some amazing photos and testament that it is who is behind the camera that makes the difference to producing a great photo. As an aside, the last two Gippsland Interclub competitions and the club's 2021 black and white landscape print were indeed taken by mobile phones.

Until next time take a moment to think about this:

"Light makes photography. Embrace light. Admire it. Love it. But above all, know light. Know it for all you are worth, and you will know the key to photography."

- George Eastman

Cheers, Bruce



2022 PakWag results

Please note that in the interests of maintaining brevity and a workable file size, I am not publishing the entire PakWag results here, only the award winners. The complete list of individual scores can be accessed via the email attachments that were sent to all members by Mike Moore, on 13 October 2022. Within that email Mike supplied the full results in PDF format and included the judge's comments within a separate attached document. Please contact Mike for further confirmation if required.

| Judges Aggregate Scores | | | | | | |
|-------------------------|--|---------------|------------|--------------|------------|-------|
| | | Prints - Open | PDI - CREX | PDI - Novice | PDI - Open | TOTAL |
| Pakenham | | 122 | 62 | 94 | 127 | 405 |
| Warragul | | 123 | 67 | 96 | 120 | 406 |

| Individual winners | |
|--------------------|--|
|--------------------|--|

| PRINTS | | | | |
|--------|--------|---------------------|---------------|----------|
| Award | Points | Title | Entrant | Club |
| 1st | 15 | Please | Mike Moore | Warragul |
| 2nd | 14 | Atop of Castle Hill | Susan Sventek | Pakenham |
| 3rd | 14 | Behind the Mask | Helene Hudson | Pakenham |
| HC | 13 | Bee in Lavender | Mike Moore | Warragul |
| HC | 13 | Sapphire Blue | Susan Sventek | Pakenham |
| HC | 13 | Tattoo | Ruth Burleigh | Warragul |

| PDI - CREX | | | | |
|------------|--------|-------------------------|---------------|----------|
| Award | Points | Title | Entrant | Club |
| 1st | 15 | Autumn Music | Linda Keagle | Warragul |
| 2nd | 14 | Saraswati | Paul Robinson | Warragul |
| 3rd | 13 | Hands of Suffering | Beth Farrall | Pakenham |
| HC | 13 | Big Ben | Ruth Burleigh | Warragul |
| HC | 13 | Which way is up in Mona | Greg Mitchell | Warragul |

| PDI - Novice | | | | |
|--------------|--------|--------------|-----------------|----------|
| Award | Points | Title | Entrant | Club |
| 1st | 15 | Refelctions | Donna Edsall | Pakenham |
| 2nd | 14 | Young Lovers | Keith Ward | Warragul |
| 3rd | 13 | Waterwall | Helen Cross | Warragul |
| HC | 13 | Ball !! | Helen Cross | Warragul |
| HC | 13 | The Fab Four | Katrina Wenzler | Pakenham |

| PDI - OPEN | | | | |
|------------|--------|----------------------|--------------------|----------|
| Award | Points | Title | Entrant | Club |
| 1st | 15 | Dress to Impress | Susan Sventek | Pakenham |
| 2nd | 14 | I'm watching you | Vikki Templeton | Pakenham |
| 3rd | 14 | My Grand Design | Christina Robinson | Warragul |
| HC | 13 | Half Past Midnight | Jack Gargas | Warragul |
| HC | 13 | Art Displayed as Art | Karl Pagenstecher | Pakenham |

Awarded Images for 2022 PakWag

PRINTS



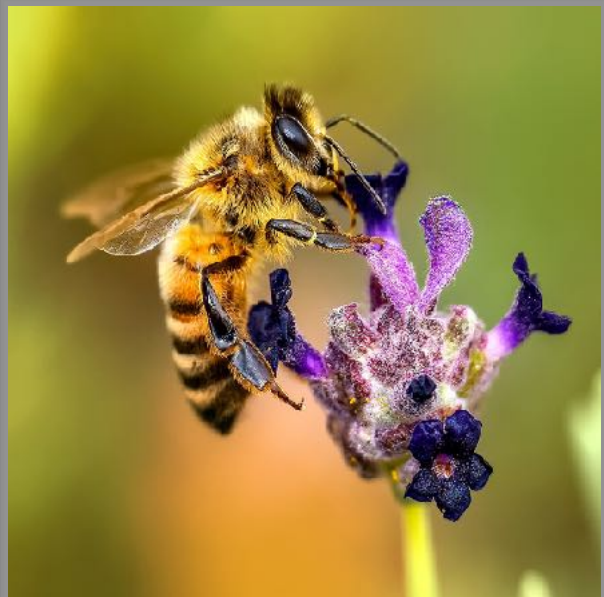
Please. Mike Moore. Warragul.



Atop of Castle Hill. Susan Sventek. Pakenham.



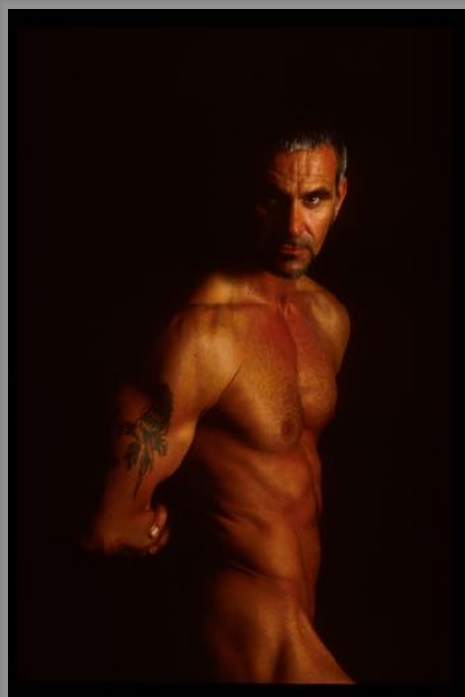
Behind the Mask. Helene Hudson. Pakenham.



Bee in Lavender. Mike Moore. Warragul.



Sapphire Blue. Susan Sventek. Pakenham.



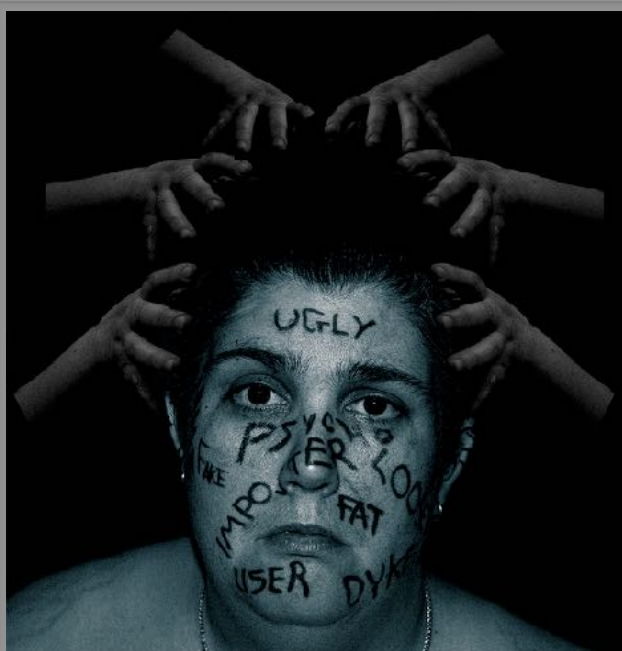
Tattoo. Ruth Burleigh. Warragul.



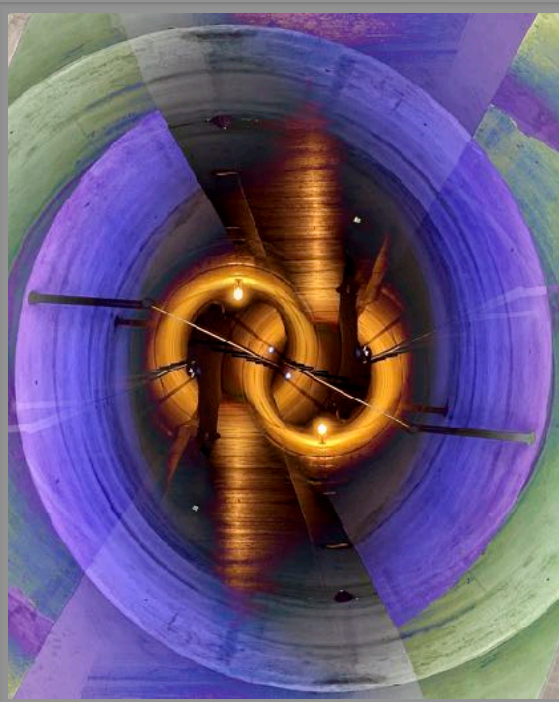
Autumn Music. Linda Keagle. Warragul.



Saraswati. Paul Robinson. Warragul.



Hands of Suffering. Beth Farrall. Pakenham.



Which Way is Up? Greg Mitchell. Warragul.



Big Ben. Ruth Burleigh. Warragul.

PDI - NOVICE



Reflections. Donna Edsell. Pakenham.



Young Lovers. Keith Ward. Warragul.



Waterfall. Helen Cross. Warragul.



Ball!!! Helen Cross. Warragul.



The Fab Four. Katrina Wenzler. Pakenham.

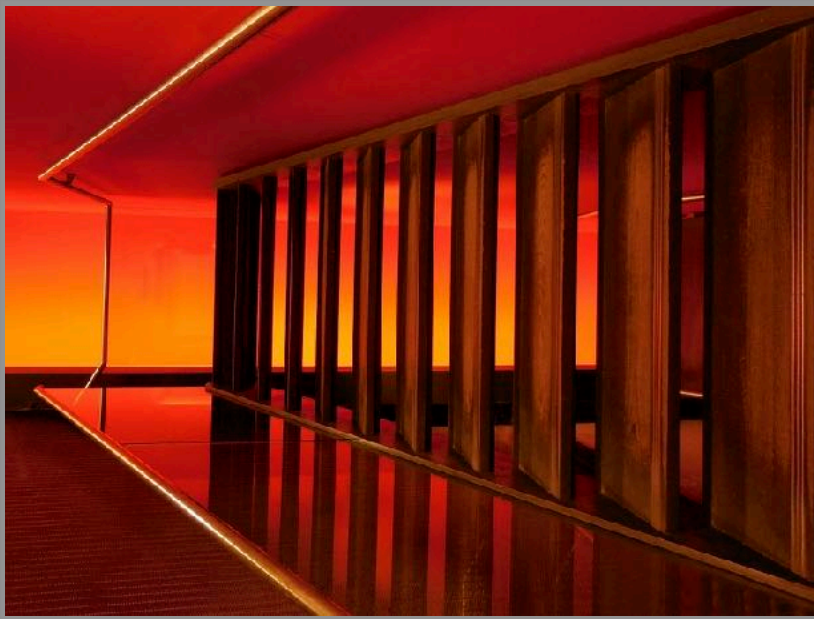
PDI - OPEN



Dress to Impress. Susan Sventek. Pakenham.



I'm Watching You. Vicki Templeton. Pakenham.



My Grand Design. Christina Robinson. Warragul.



Art Displayed As Art. Karl Pagenstecher. Pakenham.



Half Past Midnight. Jack Gargas. Warragul.

Alaska, September 2022

Part One - Juneau

From David and Jane Woodcock

It was meant to happen in 2020, going to Alaska on a photo tour organised by Dave Metcalf. Dave is a laid back Kiwi who has gone troppo, living for many years now in Bali. It finally happened this year. There were 10 of us in the group including Dave and Mark Rayner, a photographer well known for his bird and wildflower as well as his landscape images. This is the photo from the last leg back on the ferry back from Skagway to Juneau. The 11th in the middle is Tom Lang, a knowledgeable local guide and off-beat American character.



We started off in Juneau, the capital of Alaska, a tiny town perched between cliffs and the sea. It had charming inclusions such as bear-proof rubbish bins. (Bears (large bears!!) will come into the main street at night to scrounge for food.)



It also typically has 3 or 4 huge cruise ships docked there, turning over every few days, disgorging thousands of tourists into the local jewellery shops. (In winter, cruise ships don't come and these shops close up and transfer their stock to other shops they own in the Caribbean for the tourist season there. Don't be taken in by end of season sales!)



From Juneau, we took an all-day boat trip to the Sawyer Glacier.



The glacier was actively calving (i.e. bits falling off into the sea) but this did not deter dozens of seals from basking on icefloes close to the ice wall.



Next day, we took a seaplane flight to Admiralty Island, a large uninhabited island with a substantial population of Brown Bears (aka Grizzlies when you are further inland). Tourist season had closed (normally only 25 visitors allowed per day) and the Rangers had gone for the winter. We were completely alone once the plane had left.

We had to wade through freezing water in bare feet from the plane's pontoon to reach the rocky beach.



Even before we had our feet dry, a female Brown Bear with two cubs came out of the forest and onto the beach. We still had our food with us. The island has lock boxes for food that are buried in the ground. Bears will go after human food if they know there is any there. Fortunately the bears did not seem that hungry and went along the waterline just where we got out from the plane.



The bear cubs were cute but you wouldn't want to get too close. *A 500mm lens is strongly recommended on any Alaska trip.*

We were going to take a trail through the forest to a nearby salmon stream that bears go for fish breakfasts, lunches and dinners. However a **large** male Grizzly came out of the forest at the trailhead so we decided to walk along the beach instead. We were rewarded with the sight of two adults catching salmon with the cubs looking on expectantly.



Afterwards, we managed to walk back along the beach before it was inundated by the tide. (They have huge tides there.) Back on the float plane, fortunately this time it was deep enough for him to get in close so we didn't need to wade out.

Float planes are magic. You don't even notice when you leave the water and when you "land".

Back to Juneau and another night of questionable American food and then off by small plane to Haines further north.

To Be Continued next issue

Warragul Camera Club Inc

Monochrome Competition Results

A Grade Prints

| Title | Image Maker | Points | Place |
|---------------------------|--------------------|---------------|--------------|
| Bombardier | Terrie O'Dwyer | 15 | 1st |
| Glamour Girl | Terrie O'Dwyer | 14 | 2nd |
| Monica | Ruth Burleigh | 14 | 3rd |
| Crossover School Lessons | Ruth Burleigh | 13 | |
| Old Boiler | Russell Monson | 13 | |
| The Two of Us | Carol Monson | 13 | |
| TOORONGO FALLS | Gary Smith | 13 | |
| Curves | Russell Monson | 12 | |
| Farewell | Carol Monson | 12 | |
| Percy Pelican | Robyn Rosenboom | 12 | |
| Swing Bridge Mechanism | Des Lowe | 12 | |
| Fence Line | Des Lowe | 11 | |
| Murray Bridge reflections | Robyn Rosenboom | 10 | |
| The Ripponlea boathouse | Gary Smith | 10 | |

A Grade Projected Digital images (PDI)

| Title | Image Maker | Points | Place |
|--------------------|--------------------|---------------|--------------|
| Long Lasting | Des Lowe | 15 | 1st |
| Bunjil Place | Gary Smith | 14 | 2nd |
| Peaky blinder look | Cathy Tisdale | 14 | 3rd |
| Croydon Town Hall | Russell Monson | 13 | HC |
| Flowers In Jug | Marg Tylee | 13 | HC |
| Moorinya Tap | Russell Monson | 13 | HC |

| | | | |
|---------------------------------|--------------------|----|----|
| Noojee Trestle Bridge | Nigel Beresford | 13 | HC |
| Shark Bay Fishing | David Woodcock | 13 | HC |
| Sophie in Sepia | Linda Keagle | 13 | HC |
| Aldeyjarfoss | Linda Zwierlein | 13 | |
| Beaded Cross | Carol Monson | 13 | |
| Chester - Where to next | Paul Robinson | 13 | |
| Mushrooms | Christina Robinson | 13 | |
| Solitude | Mike Moore | 13 | |
| Splish Splash Play | Terrie O'Dwyer | 13 | |
| Victoria Gardens Music Pavilion | Paul Robinson | 13 | |
| Docklands Expanse | Gary Smith | 12 | |
| Flying High | Robyn Wright | 12 | |
| Hub of the Eye | Des Lowe | 12 | |
| Outback Wreck | Robyn Rosenboom | 12 | |
| Power over the flooded paddocks | Nigel Beresford | 12 | |
| Repetition | Robyn Wright | 12 | |
| Womboota house | Ruth Burleigh | 12 | |
| Baaaa | Linda Keagle | 11 | |
| Choo Choo Train | Terrie O'Dwyer | 11 | |
| Fancy Fingers | Marg Tylee | 11 | |
| Into the Never Never | Marshall Cock | 11 | |
| Peace | Carol Monson | 11 | |
| Rata reflection | Linda Zwierlein | 11 | |
| Skywalk Kalbari | David Woodcock | 11 | |
| Ghostly walkers on Pier | Robyn Rosenboom | 10 | |
| Just looking | Christina Robinson | 10 | |
| Lady in Costume | Wilma Meirmans | 10 | |
| Leopard | Ruth Burleigh | 10 | |
| Mirrored mangrove | Cathy Tisdale | 10 | |
| Mother & SonTogether | Wilma Meirmans | 10 | |
| The Cross | Marshall Cock | 10 | |
| Which Way | Mike Moore | 10 | |

B Grade Projected Digital images (PDI)

| Title | Image Maker | Points | Place |
|-------------------------------------|--------------------|---------------|--------------|
| Celebration | Helen Cross | 15 | 1st |
| Morning dew. | Irene Coates | 14 | 2nd |
| Walhalla | Jan Bennett | 14 | 3rd |
| Contemplation | Paul Mawson | 13 | HC |
| Pier | Helen Cross | 13 | HC |
| A girl's struggle with architecture | Jack Gargas | 12 | |
| Let's burn the witch! | Jack Gargas | 12 | |
| A long way away | Greg Mitchell | 11 | |
| Johns car | Jan Bennett | 11 | |
| Rhapsody In Bb | Michael Sanderson | 11 | |
| Seal Close Up | Keith Ward | 11 | |
| Waiting for the Punch Line | Michael Sanderson | 11 | |
| Broken | Kerrie Matthews | 10 | |
| Hair raising | Paul Mawson | 10 | |
| Stormy Morning in Fingal Head | Greg Mitchell | 10 | |
| Travel bus | Kerrie Matthews | 10 | |
| Water Buffalo | Keith Ward | 10 | |

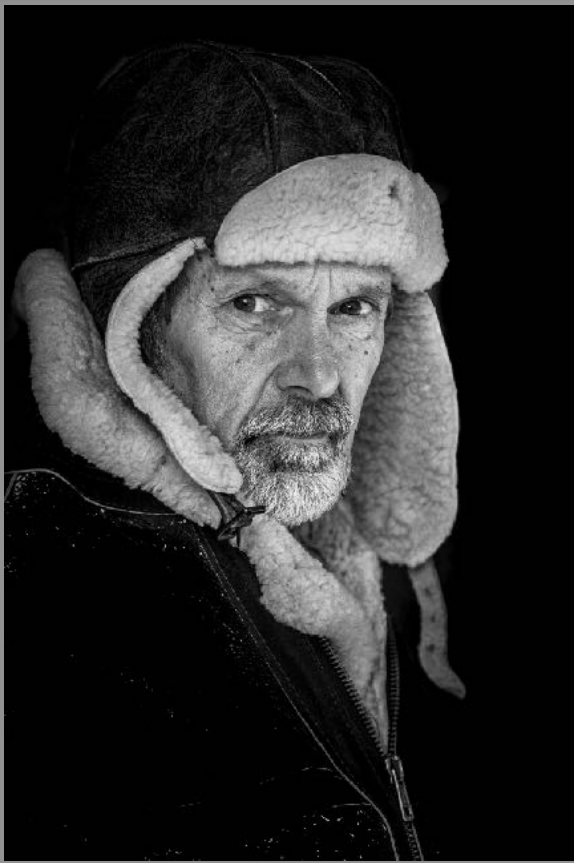
A Grade Projected Digital images - Creative (PDI- CREX)

| Title | Image Maker | Points | Place |
|-----------------------------|--------------------|---------------|--------------|
| Made in Jindivick | Ruth Burleigh | 15 | 1st |
| Welcome to the Big Smoke | Linda Zwierlein | 14 | 2nd |
| Pinhole Architectural Claws | Paul Robinson | 13 | 3rd |
| Oldstorybooks | Wilma Meirmans | 13 | |
| Another World | Linda Keagle | 12 | |

| | | | |
|-----------------------|-----------------|----|--|
| Bert Rising | Linda Zwierlein | 12 | |
| Grilled pathway swirl | Nigel Beresford | 12 | |
| The Garden Seat | Des Lowe | 12 | |
| Tree Spirit | Paul Robinson | 12 | |
| Black on White | Gary Smith | 11 | |
| Boot Makers Shop | Ruth Burleigh | 11 | |
| Country Church2 | Wilma Meirmans | 11 | |
| Lookout at Sunrise v2 | Des Lowe | 11 | |
| windblown | Gary Smith | 11 | |
| Wise | Linda Keagle | 11 | |

B Grade Projected Digital images - Creative (PDI- CREX)

| Title | Image Maker | Points | Place |
|----------------------------------|--------------------|---------------|--------------|
| Best friends | Kerrie Matthews | 13 | 1st |
| Come play with me | Kerrie Matthews | 12 | 2nd |
| Fingal Head Lighthouse Relocated | Greg Mitchell | 11 | 3rd |



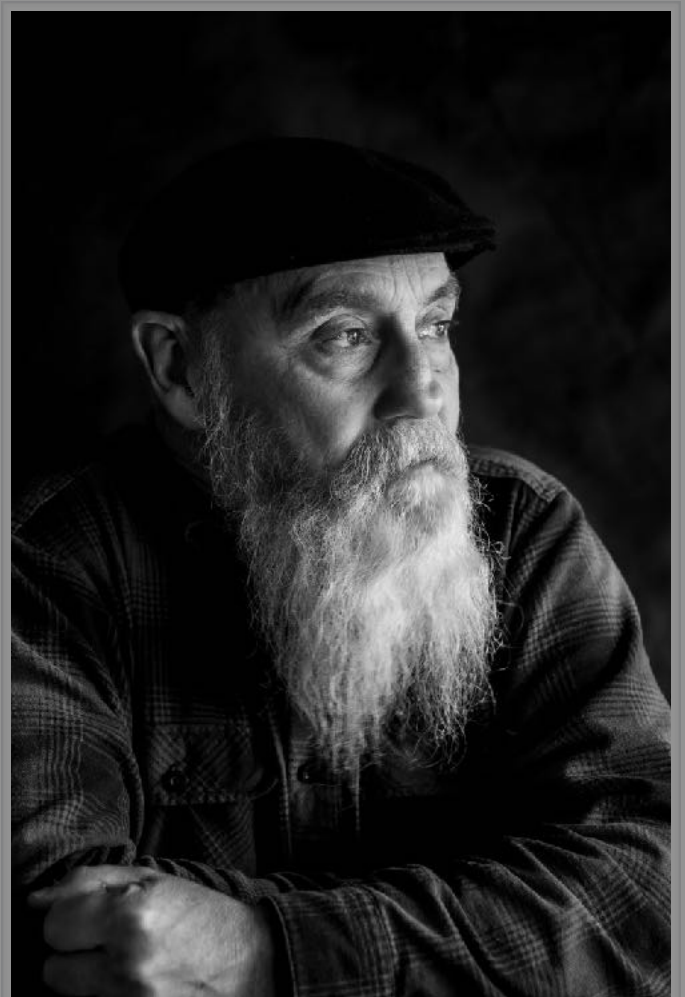
Bombardier. Terrie O'Dwyer.



Glamour Girl. Terrie O'Dwyer.



Monica. Ruth Burleigh.



Peaky blinder look. Cathy Tisdale.



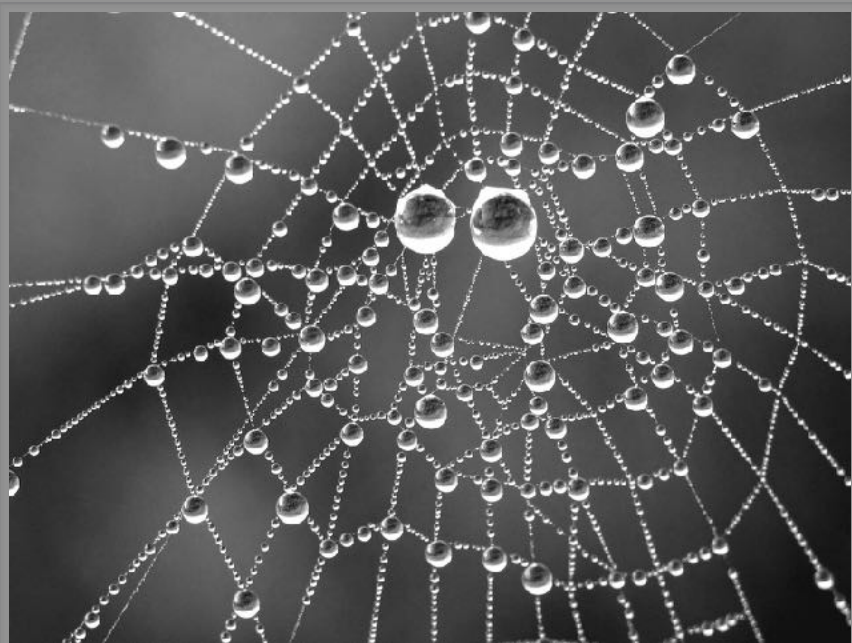
Bunjil Place. Gary Smith.



Noojee Trestle Bridge. Nigel Beresford.



Croydon Town Hall. Russell Monson.



Morning Dew. Irene Coates.



Sophie in sepia. Linda Keagle.



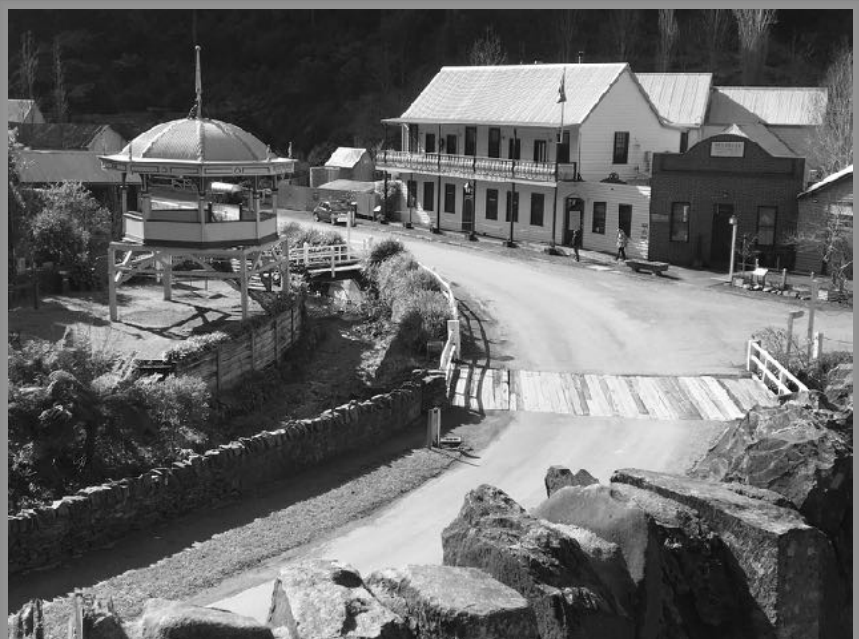
Fingal Head Lighthouse
Relocated. Greg Mitchell.



Moorinya Tap. Russell Monson.



Best Friends. Kerrie Matthews.



Walhalla. Jan Bennett.



Welcome to the big smoke. Linda Zwierlein.



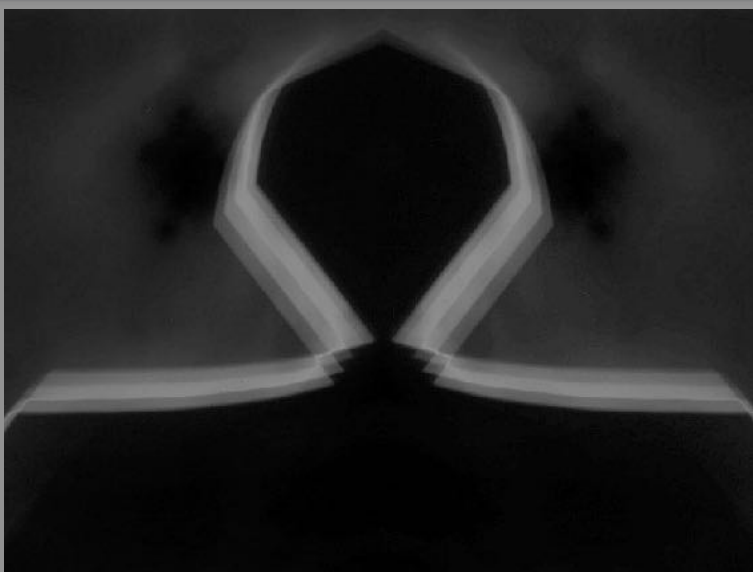
Long Lasting. Des Lowe.



Come Play With Me. Kerrie Matthews.



Flowers in Jug. Marg Tylee.



Pinhole Architectural Claws. Paul Robinson.



Celebration. Helen Cross.



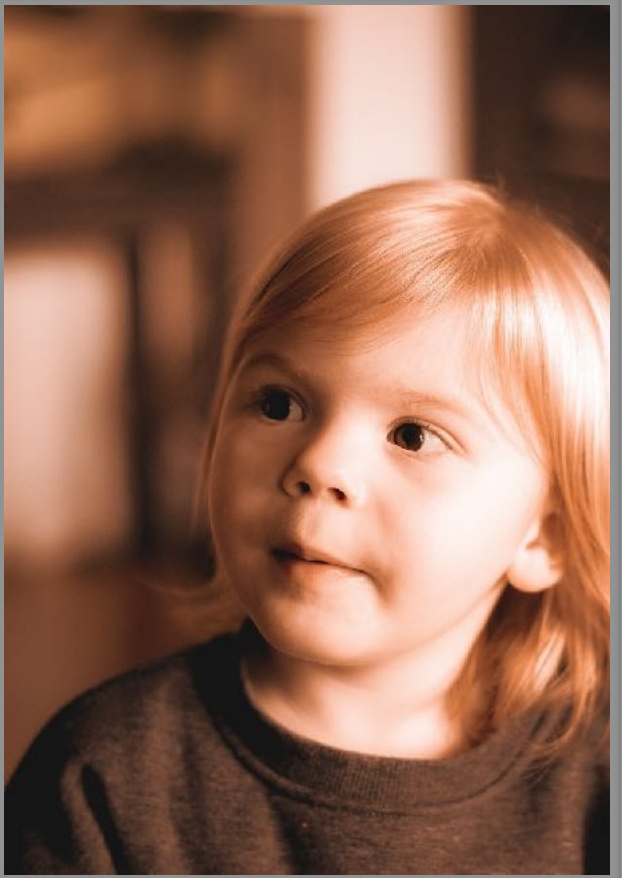
Pier. Helen Cross.



Made in Jindivick. Ruth Burleigh.



Shark Bay Fishing. David Woodcock.



Contemplation. Paul Mawson.

Warragul Camera Club

Monthly Competition Schedule and Rules

2023

| Entry Closing Date | Meeting Date and Entries Judged | Subject | Definition |
|--------------------|---------------------------------|---------------------------------|--|
| 5 December 2022 | 9 January 2023 | Animal Friends | <p>Photographs of your favourite pets or animals engaged in their favourite activities or pastimes. Look for the unusual.</p> <p>PDI Images only - No Print Entries.</p> <p>Note: This competition will be judged by members on line in Visual Pursuits and will not contribute to the end of year competition points. Instructions for this will be forwarded to all members shortly.</p> |
| 9 January 2023 | 6 February 2023 | Celebrations | Photographs of individuals, family, friends or groups involved in celebrating the moment and/or other celebratory activities. |
| 6 February 2023 | 6 March 2023 | Still Life | A non-natural arrangement of inanimate objects in a composition in which they are supportive and compatible with each other. The composition may include flowers but only as accessory to the original composition. |
| 6 March 2023 | 3 April 2023 | Interior Architectural Textures | Images, using the existing light of the structure, focussing on the interior texture and surface of any man-made structure showing how the light, colour tones or geometry provide or contribute to the character of the structure. |
| 3 April 2023 | 1 May 2023 | Speed | Images that convey the impression of movement. |
| 1 May 2023 | 5 June 2023 | Available Light - Portraiture | An image that captures a single person in a planned pose using only the lighting available within the scene. Flash and or floodlighting is not permitted but the use of a reflector(s) to assist in lighting the individual is permitted. |
| 5 June 2023 | 3 July 2023 | Rural Life | Images that depict the essential element(s) that comprise Australian Rural Life. |
| 3 July 2023 | 7 August 2023 | The Seasons | Two or more individual images processed to produce a single montage or composited image depicting the changes in the seasons of the year. |

AGM - 4 September 2023

No Competition

| | | | |
|------------------|-----------------|--|--|
| 4 September 2023 | 2 October 2023 | Monochrome | Any image containing shades of only one colour. If toning is carried out, it must be over the total photograph - partial toning and/or the addition of one extra colour is not acceptable in a monochrome section. (APS) |
| 2 October 2023 | 6 November 2023 | Scapes | <p>Scenic images showing the natural or built environment without having people as the dominant influence.</p> <p>This is an Ungraded Competition and NO images, or similar images, from previous monthly competitions are permitted.</p> <p>The overall winner for the Landscape Of The Year Award will be selected from all entries from the 4 sections. You may submit up to a total of 8 images; 2 for each section – Colour Print, Black and White Print, PDI and PDI Crex.</p> |
| 6 November 2023 | 4 December 2023 | Image Of The Year. And Photobook Judging | Your Image of the Year entries must be selected from those images, as originally entered , in competitions between December 2022 and October 2023. This is the only competition where previously awarded 1st, 2nd, 3rd or HC images are also permitted. |
| 4 December 2023 | 1 January 2024 | Mobile Street Photography | <p>Colourful street photography. Images must be taken with a mobile phone depicting the street environment and or the people in the street. Colour images only.</p> <p>PDI Images only - No Print Entries.</p> <p>Note: This competition will be judged by members on line in Visual Pursuits and will not contribute to the end of year competition points.</p> |
| 1 January 2024 | 5 February 2024 | TBA | TBA |

Audio Visual

Audio Visual entries will be accepted from March through until 1st May 2023 and will be judged at a non-competition/social night.

Photobook

A Photobook competition will be held with entries being received up until 6th November with the judging of entries on 4th December in conjunction with the Image Of The Year presentation. Photobook rules are on the following page.

Commentary only Entries

Members may submit an entry for comment/guidance by the judge. These entries are for the members benefit only and are not judged competitively, and receive no points or awards and are not displayed at the monthly meeting.

Comments from the judge are forwarded to the individual member when they are received and are not made available to other members. The member may choose to share these comments with other members outside of the meeting if they so desire.

Competition Calendar and Rules 2023

Only members with full club membership may enter Club competitions.

Entries into monthly competitions are ineligible if they have previously received a first, second, third or HC in any other monthly competition. Check wording for our special competitions (Scape's and Image of the Year) in the calendar for different rules of entry.

The winner of the Jack Hinshelwood trophy will be selected from all the Monochrome entries in the October Monochrome Monthly Competition.

ALL print images must be mounted. Images may be colour or monochrome in all print competitions, unless otherwise specified, and must follow the monthly set theme.

Images may be held by the Competition Coordinator for special competitions.

The Committee reserves the right to withhold any entry from display.

COMPETITION SECTIONS

Prints A & B Grade: Members may submit a maximum of two print entries, with a minimum area of 623.7 cm² and a maximum area of 1589.07 cm², with a maximum size mount of 400mm x 500mm. Members who wish to continue using or reusing 16" x 20" mounts may do so. A digital version of print entries must be uploaded to the club website before 11.30 pm on the entry night.

Projected Digital Images (PDI's) and Projected Digital Images Creative (PDI CREX) A Grade & B Grade: Two entries allowed in PDI and two entries in PDI CREX allowed in each grade, submitted via the club website.

Projected Digital Images Creative (PDI CREX)

If you are entering PDI CREX competitions, all aspects of the image must be entirely the work of the maker. No image having been entered in CREX can then be entered in other sections.

Entry deadline: Entries must be submitted no later than 11.30pm on the Monday meeting night by uploading to the club website. Sizing for all PDIs must be no larger than 1920 pixels wide x 1080 high. If an image is in portrait format (taller than it is wide), then the tall side can be no larger than 1080 pixels. Images should be in sRGB colour space and have a maximum size of 2MB in JPG format.

Entries for Judge's Comments Only

1. Members may enter one digital image, either Monochrome, Colour or Crex for comment by the judge. (Note: - As the judges selected for each monthly competition may have judge specific areas or topics only, the image should preferably be in the same theme as the competition topic itself).
2. Images for "comment only" will be provided to the judge "ungraded".
3. The judge's comments will be forwarded by email to the individual member, and the images will not be displayed along with other PDI images on the meeting night, but will be displayed on the club website along with all other entries for that month.
4. The image entered for "comment only", may be re-submitted as a "comment only" image again, other than during the period when the image of the year entries are being accepted (currently November). This will allow members in a non-competitive environment, to gain another impression of the image from a different judge, possibly without change to the image, or to change the image based on the original feedback to improve the image and then seek comment.
5. "Comment only" images will not count as a submission for the aggregate award of points and may not be entered into the image of the year, unless the member elects to subsequently submit an image, which had previously been a "comments only image", into a competitive section. That image will then be eligible to accrue points in the competitive section as per normal, towards the image of the year.
6. Once a "comment only" image has been entered into a competitive section the image is no longer eligible to be entered in the "comment only" section.
7. Members may enter their other images into PDI, Print and Crex sections as per normal in addition to the "comments only" entry.
8. Entries will be accepted for comment with the same cut off times as per other competitions.

AUDIO VISUAL

There will now be 2 sections, 'Open' and '3.21'. Open allows a maximum of 12 minutes. Shorter videos are encouraged. The 321 section is restricted to entries with a total running time of 3 minutes and 21 seconds and can be any time up to 3 minutes and 21 seconds. All entries must be MP4's or .exe files running on Windows.

To be successful it should tell a story, having a beginning, middle and ending. The addition of video is accepted but must not exceed 20% of the total running time. For complete information regarding this competition please see the VAPS definition and rules -

<http://www.vaps.org.au/media/downloadabledocs/2018%20Documents/2018%20Convention/VAPS%20Interclub%20AV%20Rules%20approved%20AGM%20%20Sun19Nov2017%20PDF.pdf>

PHOTOBOOK

One entry. Book compilation must be member's own work and can include text and images from other sources. Sources used must be acknowledged.

The name of the entrant must be printed on the cover and/or the first page. There are no restrictions on the subject, or the printer, but the size must be 30cm x 30cm or smaller and with a maximum of 60 faces (30 pages). Fold-out pages are permitted but not loose pages. The book must be bound.

Judging criteria will be on, content and storytelling.

Here are some image from the recent mid-week outing, organised by Nigel Beresford, on Wednesday 19th October, to the 'Naked Racer', and the Moorabin Air Museum, Melbourne.



Des Lowe (images left and below)



Geoff Smith
(images above
and right)





Russell Monson (images above and below)



Gary Smith (images above and left)





Gary Smith (all images this page)



Thank you to all of our generous sponsors!

The Warragul Camera Club appreciates the continued support of all our sponsors for the National Competition and Exhibition. The competition and exhibition would not be possible without their support, and we encourage members (and other readers) to consider them when making purchase decisions.



PHOTOGRAPHY WORKSHOPS AND TUTORING
WWW.THEFOTOCREATIVE.COM.AU

LOUISE SEDGMAN
PHONE: 0412 942897
EMAIL: LOUISE@THEFOTOCREATIVE.COM.AU
ADDRESS: 51 WELLWOOD RD DROUIN, VIC

Quirk Real Estate

Vin Quirk
licensed estate agent

0417 350 720
vin@qre.com.au
www.qre.com.au

66 Queen Street
Warragul 3820
03 5623 6062



36 Phoenix Street, Warragul Vic 3820
Open Mon-Thur 7.30am-4.30pm
Fri 7.30am-11.30am
Phone: (03) 5623 2885

In2Frames is a leading wholesale Picture Framing company.
We manufacture all our frames and promote Australian Made.
From standard photo size's to custom size you require.
Large range of colours in acid free mat board,
3mm or 5mm Standard Acid free Foam Core Backing or Adhesive.

Please visit our showroom for all your framing needs.

10% discount to all Camera Club Members upon mention of this ad.

Email: sales@in2frames.com.au Web: www.in2frames.com.au

THE SHOT HOUSE

COFFEE BAR • BEANERY • EQUIPMENT

Shop 2
Village Walk
Yarragon Vic 3823

Open 6 days
(03) 56342811
theshothouse@outlook.com



Laurie Collins Sculpture Garden
and Red Tree Gallery

420 Main Jindivick Rd Jindivick

Always open

56285224

www.lauriecollins.com.au

BenQ CRUMPLER

Need a real photo store?

For over 50 years, Roylaines has provided Gippsland's camera enthusiasts with quality products and services.

The Spargo's are proud this third generation family business continues as leaders in the supply of Photographic & Electronics equipment as it continues to serve and help its local community.

Roylaines has been a proud supporter of local camera clubs and their various competitions for many years.

Help us, help you! Come and visit us instore today.

Not just a photo lab...
More than just a camera store

- * Digital Film & Printing
- * Cameras & lenses
- * Filters & Studio Kits
- * Friendly service and Great Advice!



148 MAIN STREET PAKENHAM 3810, 5941 1562

16 SMITH STREET WARRAGUL 3820, 5623 4255

Not just a photo lab...
More than just a camera store

- * Digital Photo Printing
- * C41 Processing
- * Cameras & Lenses
- * Studio Equipment
- * Flashes & Tripods
- * Custom Framing
- * Large Format Printing
- * Camera Servicing & Repairs
- * Printers, Inks & Great Advice



16 Smith Street Warragul
03 5623 4255



Hahnemühle



Spicers supplies Hahnemühle products
as part of our Fine Art & Photography range.



For enquiries please contact your local Spicers representative.

1300 132 644 SPICERS.COM.AU

homegrown

FINE ART PRINTING

SUPPLYING LOCAL INDUSTRY FOR OVER 12 YEARS

PHOTOGRAPHIC PRINTS | CANVAS PRINTS
COTTON RAG PAPERS | ARTIST REPRODUCTIONS



*Photographic Prints & Canvas
Made in Gippsland*

EPSON
EXCEED YOUR VISION







Club member discount
for your photography website

0418 595 080

homegrown
DESIGN & PRINT



Community Bank
Drouin & District



Community Bank
Drouin & District



Making great things happen.

When you choose to bank with us, great outcomes – as determined by your local community – are the result.

That's the power of community banking.

Drop into your nearest branch at 42 Princes Way, Drouin or phone 5625 4544.



Bendigo Bank
Bigger than a bank.

bendigobank.com.au

Bendigo and Adelaide Bank Limited, ABN 11 068 049 178
AFSL/Australian Credit Licence 237879. S55967-1 (490636_v2)
(10/07/2019)

